



DECEMBER 2021

Elementary

Nutritional Development Services
Menu is subject to change, a variety of low fat or skim milk is offered daily, condiments offered daily, fruit and vegetable juices are 100% juice, grains are whole grain rich, all items are pork-free.

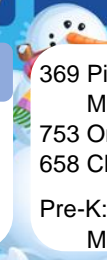


Monday

323 Apple Cinnamon Muffin **6**
752 Fruit Punch Juice
608 Dole Tropical Fruit Cup
Alternative: 384 Cinnamon Toast Crunch Breakfast Kit
Pre-K: 349 Corn Chex

325 Cinnamon Chex Cup **13**
753 Orange Juice
608 Tropical Fruit Cup
Alternative: 385 Trix Cereal Breakfast Kit
Pre-K: 345 Honey Scooters

359 Honey Scooters **20**
752 Fruit Punch Juice
609 Dole Mixed Fruit Cup
Alternative: 384 Cinnamon Toast Crunch Breakfast Kit
Pre-K: 342 Cheerios



Tuesday

369 Pillsbury Berry Blast **7**
Mini French Toast
753 Orange Juice
658 Cherry Craisins
Pre-K: 339 Orange Cranberry Muffin

328 Chocolate Chip Muffin **14**
749 Apple Cherry Juice
684 Mixed Berry Applesauce
Pre-K: 335 Banana Muffin

322 Blueberry Muffin **21**
753 Orange Juice
690 Apple Crisps
Pre-K: 330 Blueberry Muffin

Wednesday

334 Cinnamon Toast **8**
Crunch Cereal
749 Apple Cherry Juice
645 Dole Pineapple Cup
Pre-K: 369 Berry Blast Mini French Toast

366 Blueberry Bagel **15**
752 Fruit Punch Juice
659 Watermelon Craisins
Pre-K: 343 Rice Chex

369 Pillsbury Berry Blast **22**
Mini French Toast
750 Apple Juice
659 Watermelon Craisins
Pre-K: 307 Cherry Baked Frudel

Thursday

313 Rebel Ventures Apple **9**
Delight Crumble
750 Apple Juice
691 Strawberry Apple Crisps
Pre-K: 346 Cinnamon Toast Crunch

333 Blueberry Chex Cup **16**
748 Grape Juice
684 Mixed Berry Applesauce
Pre-K: 802 Scrambled Eggs With Turkey Ham

323 Apple Cinnamon **23**
Muffin
749 Apple Cherry Juice
645 Dole Pineapple Cup
Pre-K: 339 Cranberry Orange Muffin

Friday

329 Trix Cereal Bar **10**
748 Grape Juice
684 Mixed Berry Applesauce
Pre-K: 332 Apple Cinnamon Muffin

319 Orange Cranberry **17**
Muffin
750 Apple Juice
690 Apple Crisps
Pre-K: 366 Blueberry Bagel



27

28

29

30

31

HAPPY NEW YEAR!

334 Cinnamon Toast **3**
Crunch Cereal
753 Orange Juice
691 Strawberry Apple Crisps
Alternative: 385 Trix Cereal Breakfast Kit
Pre-K: 330 Blueberry Muffin

359 Honey Scooters **4**
748 Grape Juice
684 Mixed Berry Applesauce
Pre-K: 349 Corn Chex

327 Pillsbury Maple Mini **5**
Waffles
750 Apple Juice
645 Dole Pineapple Cup
Pre-K: 803 Colby Cheese Omelet

319 Orange Cranberry **6**
Muffin
752 Fruit Punch Juice
659 Watermelon Craisins
Pre-K: 331 Corn Muffin

328 Chocolate Chip Muffin **7**
749 Apple Cherry Juice
647 Dole Mandarin Orange Cup
Pre-K: 346 Cinnamon Toast Crunch

PLEASE READ CAREFULLY. Parents are strongly advised to review the menu completely to ensure that each of the food items in suitable for their children, and will not trigger an allergic reaction or related illness. The Archdiocese of Philadelphia, Diocese of Camden, Nutritional Development Services, Inc. and your children's school shall not be responsible for any allergic reaction or related illness caused by any food item. Upon request and without charge, Nutritional Development Services will provide parents with information on any food item, which has been provided by the suppliers of the food item. To request product information please call (215) 895-3470 during normal business hours.